



Waimakariri

North Canterbury

Official Visitor Guide



KAIAPOI | WOODEND | PEGASUS | RAVENSWOOD
WAIKUKU | RANGIORA | CUST | OHOKA | OXFORD

visitwaimakariri.co.nz

CONTENTS

Kaiapoi isite Visitor Centre	2
Welcome	4
Itineraries	5
Events	6
Kaiapoi	8
Woodend	21
Pegasus	24
Ravenswood	26
Waikuku	28
Rangiora	32
Tiaki Promise	43
Cust	44
Ohoka	45
Oxford	48
Responsible Camping	54
District Map	55

2024/26

Ashley Gorge



Kaiapoi **i**site

EXPERT LOCAL KNOWLEDGE AND BOOKINGS THROUGHOUT NEW ZEALAND

The Kaiapoi isite Visitor Centre is part of New Zealand's isite network with trained and friendly staff who are local experts.

We can assist with your travel itinerary and book accommodation, transport and attractions, New Zealand wide. We supply local and regional maps, DOC and back country hut tickets. Fish and Game fishing licences and Kiwi Camp KiwiCash key tags.



Kaiapoi isite Visitor Centre

A 143 Williams Street, Kaiapoi
M P.O. Box 80, Kaiapoi 7644
P +64 3 327 3134
E info@kaiapoivisitorcentre.co.nz

Disclaimer: This guide provides you with general information that is true and accurate to the best of our knowledge at the time of printing.



WHY YOU ARE ALWAYS WELCOME

10 kms of New Zealand beaches, 60 kms of accessible cycleways, 2 conservation areas in the foothills, 2 regional parks, 1 coastal park, wetlands and lakes all with cycling and walking opportunities, 2 braided rivers perfect for fishing, boating and having fun, 5 golf courses, 3 farmers' markets, 3 art galleries, 4 museums, 2 urban centres, 6 smaller towns, villages and beach settlements, 70 cafes and dining options, 30 boutique shops, fun events.

All only 15 minutes' north of Christchurch accessed from the Northern Motorway, State Highway 1. For a comprehensive list of all eateries, activities, and accommodation, visit www.visitwaimakariri.co.nz

ITINERARIES TO INSPIRE

We have created itineraries that are fun and unique for you to try. They are designed to inspire you to explore and enjoy the district. Find out why Waimakariri is the perfect place to spend your days, no matter what season you arrive in. Choose your favourite itinerary and download it from www.visitwaimakariri.co.nz/itineraries



WAIMAKARIRI EVENTS

There are plenty of fun events happening in Waimakariri, from charming farmers markets, fun runs and walks, to large scale annual events. Find out what's on at www.visitwaimakariri.co.nz/events or scan below.



North Canterbury Wearable Arts



Kotkon
WOODFORD GLEN 
Speedway

FUN FOR THE WHOLE FAMILY!
★ ★ ★

FOR THIS SEASONS RACE DATES VISIT:  

www.woodfordglen.co.nz

WHY NOT MAKE A DAY OF IT



Kaiapoi River

KAIAPOI

Explore the picturesque river town of Kaiapoi. This rapidly growing town still retains the heart and feel of a village. Enjoy aquatic activities, walks, boutique shops, natural attractions and events. A great place to stop, explore and plan your Waimakariri journey.

Only 15 minutes' from Christchurch.

MUST DOS:

- Cruise or kayak the Kaiapoi River
- Take a trip on an airboat up the Waimakariri River
- Make a splash at the water fun park
- Visit the art gallery and museum
- Play golf on a par 3 nine hole, or an 18 hole course
- Stroll or bike the trails on the riverbanks and beyond
- Stock up at the Saturday morning farmers' market
- Drop into the Kaiapoi isite Visitor Centre for local information

ALPACA FARM TOURS

Just a 15 minute drive north of the city centre.



DEPARTURE TIMES: Daily at 10am, 2pm and 4pm

DURATION: One hour or longer if desired

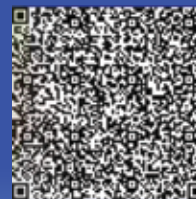
COST: \$40 adults, \$20 child. Bookings Essential
www.alpaca-farmstay.co.nz

TOUR INCLUDES: Informative and entertaining commentary, feeding and touching the alpacas, cute photo opportunities and visit to the fibre shed, alpaca shop and trophy room. Spectacular property with garden and river setting and lots of cute alpacas.

BUS SERVICES TO SILVERSTREAM: Take Metro Bus 95 to Silverstream (West Kaiapoi). Walking distance to farm. Departs City Bus Interchange at the corner of Lichfield and Colombo Streets.

SILVERSTREAM ALPACA STUD FARM

68 Moodys Road,
RD 2, Kaiapoi 7692
silverstream.nz@gmail.com



GPS Co-ordinates to
Silverstream Alpaca Farm



*An Experience ...
more than just a ride!*



AirBoat

Skim over wet stones in a real American style Florida AirBoat, the only commercial AirBoat operating on New Zealand's braided rivers. Experience the arm chair ride!



JetBoat

Speed across the braided shallows, spin in your own boat length and experience just why Bill Hamilton's jet boat and the Waimakariri River are world famous.



**AirBoat or JetBoat - no-one knows
the Waimakariri like Alpine Jet Thrills!**

**Enquiries 0220 26 36 26
www.alpinejetthrills.com**

ABELFIELDS

- A** 553 Williams Street, Kaiapoi
- P** 021 59 4979
- E** abelfields.kaiapoi@gmail.com
- W** fitandabel.com/abelfields



Welcome to Abelfields, a Wellness Retreat nestled on a 4.5acre property on the outskirts of Kaiapoi, offering you a place to relax, unwind, recharge and connect with nature.

This peaceful retreat, not far from Christchurch city, invites you to slow down, breathe in the fresh air and appreciate your surroundings.

You can enjoy the morning or evening sheep 'muster', relax in a hammock with a book, swim in the 12m indoor heated pool (www.fitandabel.com), taste Abelfields produce, wander through the Native Regeneration 'Safe Haven' area, have a stretch session, experience beekeeping, and much more.

Owned and run by Dan and Penelope, Abelfields provides you the opportunity to 'just be'.



ART ON THE QUAY

- A** Ruataniwha Kaiapoi Civic Centre
176 Williams Street, Kaiapoi
- P** 03 327 0066
- E** info@artonthequay.com
- W** artonthequay.com



Kaiapoi's Art on the Quay exhibits a wide variety of art, from painting and photography to ceramics and sculpture.

Exhibitions change every five weeks showcasing the work of both local artists and those further afield.

Become a Friend of the Gallery and receive invitations to exhibition openings, giving you the first opportunity to purchase artworks.

Kaiapoi's community art gallery is in the Ruataniwha Kaiapoi Civic Centre which houses the Kaiapoi Museum and Library and overlooks the Kaiapoi riverbank and marine precinct.

Follow us on Facebook: Art on the Quay and Instagram: [kaiapoiartonthequay](https://www.instagram.com/kaiapoiartonthequay) and check out our website for current and past exhibitions.

Contact Jackie Watson on 022 350 9547 for exhibition space.






**Have dinner with the locals at
CBK Craft Bar and Kitchen.**
Located in the heart of Kaiapoi
with over 60 Hand-Picked Craft Beers
and Ciders, home of the smoking hot
Stonegrill and great daily deals,
what's not to love?



CBK CRAFT BAR & KITCHEN KAIAPOI
4/77 HILTON STREET, KAIAPOI
03 327 9224 | KAIAPOI@CBK.NZ
WWW.CBK.NZ/KAIAPOI

KAIAPOI LUXURY APARTMENTS

A 188 Williams Street, Kaiapoi
W kaiapoluxuryaccommodation.nz

Indulge in a boutique, fresh, and fabulous escape at one of the two beautifully designed 2-bedroom, 1-bathroom first-floor apartments - perfect for luxury getaways or visiting family and friends.

Explore the central location, with cafes, restaurants, bars, brewery, boutique shopping, supermarket and Kaiapoi River Queen Cruises only 200 metres away - everything you need is at your doorstep.

The property's central location has an open-plan kitchen, dining, and living space that exudes sophistication. Enjoy complimentary Hi-Speed Wi-Fi, heat pump and the convenience of a combination washing machine/dryer. The apartments have king and queen-sized beds, plus a trundler along with quality linen, ensuring a great night's sleep.

There is ample off-street parking available right at the apartment's door.



KAIAPOI RIVER QUEEN

A Kaiapoi River
Williams Street, Kaiapoi
P 0274 350 596
E kaiapoiriverqueen@gmail.com
W kaiapoiriverqueen.co.nz

Discover the beauty of the Kaiapoi and Waimakariri Rivers aboard the replica paddle boat, Kaiapoi River Queen.

This must-visit attraction offers a unique way to experience the natural beauty of the Kaiapoi River and its surroundings, making it a perfect destination for a relaxing day out.

Being a flat bottom boat she can sail no matter where the tide is.

The boat is berthed on the east side of the Williams Street Bridge in Kaiapoi and has a purpose built floating jetty allowing access for all customers.

Conveniently located in front of riverside dining options.

We can offer lunch, morning and afternoon tea cruises for private charters, please enquire for further details.



KAIAPOI ON WILLIAMS

- A** 16 - 20 Williams Street, Kaiapoi
P 03 327 0806 or 0800 327 080
E stay@kaiapoionwilliams.co.nz
W kaiapoionwilliams.co.nz

Enjoy a comfortable stay in the beautiful River Town of Kaiapoi.

Kaiapoi on Williams, the only motel in Kaiapoi offers 6 serviced, large studio units and 1 two bedroom cottage perfect for groups.

5 minutes from the northern motorway and northern corridor.

15 minutes to Christchurch Airport.

Bus service at gate.

Closest motel to numerous wedding venues.

Cycle way access at gate.

Handy access to Waimakariri River walkways, jetboating and fishing.

Walking distance to many shops, cafes and restaurants in Kaiapoi.

Gold Card discount available when booking direct 5 Star Reviews on Google my business.



KAIAPOI GOLF CLUB

- A** 373 Williams Street, Kaiapoi
P 03 327 7320
E info@kaiapoigolf.co.nz
W kaiapoigolf.co.nz

The 'Jewel of North Canterbury', Kaiapoi Golf Club is a popular destination for golfers of all levels.

Just 15 minutes from Christchurch, this beautifully manicured course is a must on your itinerary.

Carts are available for hire or walk the course and take in the picturesque scenery. After your round enjoy restaurant/bar facilities provided by our splendid caterers – Tasteful Affairs.

We recommend you call to book a tee time. Perhaps enquire about joining one of our weekly competitions, so you get to play with some of our friendly members. Practice areas include putting and chipping greens, a bunker, warm-up nets and practice fairway.

We look forward to welcoming you to our course.



Kaiapoi River

KAIAPOI CLUB

- A** 113 Raven Street, Kaiapoi
P 03 327 7884
E info@kaiapoiclub.co.nz
W kaiapoiclub.co.nz

The Kaiapoi Club welcomes members and guests affiliated to Clubs NZ.

Some restrictions on the purchase of alcohol but non-affiliated visitors welcome to utilise the dining and other facilities available.

The Bistro is open Wednesday to Sunday for lunches and evening meals and the restaurant's open Friday to Sunday for dining from 5.30pm.

Watch all the major sporting events on the large screens or visit the TAB and spacious Gaming Room.

Ample parking available.



KORE HIRE

- A** Raven Quay, Kaiapoi
P 021 669 474
E info@kore.co.nz
W kore.co.nz/kore-hire

Make the most of the water.

Explore the ever-changing Kaiapoi River with our kayaks, row bows and stand up paddle boards.

Head to the river with friends, family or as a group for a great time on the water.

Enjoy the tree lined banks, going under bridges and the perspective of the town centre from the water.

Great (affordable) fun for the whole family.

Safety briefing and instruction given to get you started.

Open weekends and school holidays.

Bookings preferred.

Find us on Facebook: KORE hire



RED EIGHT CAFÉ

- A** 143 Williams Street, Kaiapoi
P 03 327 0136
E hello@redeightcafe.co.nz
W facebook.com/redeightcafe

Plan a trip to Red Eight Café located in central Kaiapoi and delight in their delicious, gourmet cabinet food that is made in-house.

Try a dish from their scrummy brunch menu or indulge on a Friday with their 'Sweet Treat Friday' baked specials.

Serving Four Aves coffee with a smile and a variety of daily pizza flavours, this modern and light filled café is well worth a visit!

They also have an accessible entrance and handy parking onsite.

Open six days a week from Monday to Friday 7am – 3.30pm and Saturday 8am – 3pm.

Be sure to follow them on Facebook to stay up to date with their latest creations!



RIVERLANDS GOLF

- A** 45 Doubledays Road, Kaiapoi
P 03 327 5511
E riverlandspark@xtra.co.nz
W riverlandspark.co.nz



Our 9 hole par 3 is an exciting and fun course to have a round of golf on. Set on the quiet, rural outskirts of Kaiapoi.

It's a great course for both experienced and beginner golfers. The short nature of the par 3 course simplifies the game for beginners and allows more experienced players to fine tune their skills. If it's your first time out or its just second nature to you, come in for a round.

Everyone's welcome, school groups, club days, family fun or work parties.

Riverlands Golf is open 7 days from dawn to dark, enquire at Riverlands Holiday Park office.

Green Fees: \$12 per adult including golf clubs balls & bag. \$10 gold card holders. \$5 children 6 to 16 paying with an adult. \$25 for monthly green fee. \$5 for Riverlands guest. Group Discounts are given for groups larger than 10 for Golf.



SUSHI i

- A** Unit D/178 Williams Street, Kaiapoi
P 03 925 8511
E kaiapoi@sushi-i.com

Sushi i offers the best premium selection of sushi.

All sushi is made fresh throughout the day using top quality ingredients.

Our range of rolls and nigiri are designed to have maximum flavour and visual impact with generous filling in each piece.

Beautifully modern restaurant with stunning glass cabinet meticulously filled with expertly crafted sushi.

Fill your own plate with those pieces that call out to you or grab an eco-friendly takeaway box for lunch on the go.

Open 10am – 5pm Monday to Saturday, 11am – 3pm Sunday and Public Holiday.



THE PLATFORM BREW BAR

- A** 184 Williams Street, Kaiapoi
- P** 03 926 2941
- E** theplatformbrewbarnz@gmail.com
- W** theplatformbar.co.nz

Relax with a cold brew and a delicious plate of food from The Platform Brew Bar.

Ideally situated overlooking the Kaiapoi river, this modern building is the perfect place to catch up with friends.

If it's sunny be sure to grab a seat outside and enjoy the river views.

Check out their weeknight specials, live music nights and happy hour offerings on their Facebook page.

Bookings are highly recommended, so phone 03 926 2941 to book your table.



URBAN REVIVAL

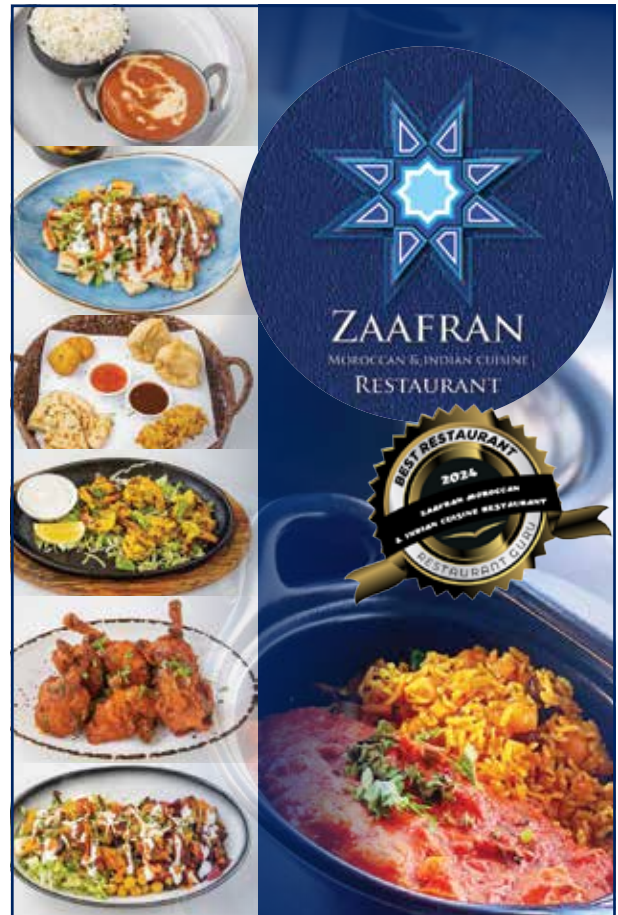
- A** 42 Silverstream Boulevard, Silverstream, Kaiapoi
- P** 03 421 7787
- E** eat@urbanrevival.co.nz

Urban Revival is an inviting spacious café to meet for deliciously fresh, site prepared food and locally roasted coffee. With delectable specials and daily bagels to entice you, there's no excuse for not having an adventure.

Being fully licensed, you're invited to relax within its eclectic surrounds and indulge in a vino or two with friends. Or choose from five beers on tap.

On cooler days the log fire is lit – nothing beats the ambiance and warmth of a radiating fire. Enjoy freshly made soup or the spectacular creamy mushrooms. Perhaps an "Urban Start" cooked breakfast or some other hearty comfort food from the menu instead. Coupled with your choice of beverage; from teas to coffees and iced chocolate to smoothies. Perfect!

Don't miss their Friday night dinners showcasing seasonal local produce, pouring local wines and beers.



ZAAFRAN is a place that does simple food well by locally sourcing fresh, organic meat, fish and vegetables wherever possible.

Well known for serving fast, fresh & healthy food, fair prices and generous portions.

Enjoy an extensive selection of Vegan and Vegetarian options as well as Dairy Free and Gluten Free.

Sharing Love & Happiness since 2016

97 Williams Street, Kaiapoi
03 327 2555 | orders@zaafran.co.nz
www.zaafran.co.nz



Waimakariri Libraries

Our libraries are a welcoming space for all ages to relax and connect.

Our Team can help with your queries or you can use our free Wi-Fi, computers, read a book or newspaper. We also have printing, scanning and photocopying available.

We host a diverse programme of events and have a range of activities in the library including craft, colouring, board games and an X-box for our community to use.

Visit our website to see what we have on during your stay in Waimakariri.

Rangiora

141 Percival Street, Rangiora

Kaiapoi

174 Williams Street, Kaiapoi

Oxford

34 Main Street, Oxford

Find Out More

waimakaririlibraries.com
03 311 8901
library@wmk.govt.nz



Tūtaepatu Trail

WOODEND

Woodend has two distinct areas, the township and the beach settlement. With a wide open sandy beach to stroll, swim or surf at, a playground and picnic areas for the family, walking and cycling tracks to explore, Woodend is a recreational paradise. Woodend township offers a range of eateries to fuel you or to satiate your appetite. Located 15 minutes' from Christchurch.

MUST DOS:

- Walk or cycle the trails to Kaiapoi or Waikuku
- Take a swim between the flags
- Check out the Tūhaitara Coastal Park base camp for info about the environment

TE KŌHAKA O TŪHAITARA TRUST

- A** 1 Woodend Beach Road, Woodend
E enquiries@tuhaitarapark.org.nz
W tuhaitarapark.org.nz



Te Kōhaka o
Tūhaitara Trust

Tūhaitara Coastal Park covers 10.5 km of coastline between the Waimakariri River and the township of Waikuku.

The park comprises many significant natural features including the 50ha spring fed Tūtaepatu Lagoon, home of many native flora and fauna species.

The park has a network of walking, cycling and horse trails. The walking and cycling trails run the length of the park and connect to the adjoining beach settlements. Horse float parking is located at Kiwi Ave, Waikuku and Ferry Road, Woodend Beach with clearly marked trails and access to the beaches.

Tūhaitara Coastal Park serves to preserve Ngāi Tahu values, retain and enhance rare indigenous biodiversity, and provide recreational and educational opportunities for all people.

Tūhaitara Coastal Park



PEGASUS GATEWAY MOTELS

- A** 4 Main North Road, SH1, Woodend
P 03 312 7829 or 0800 555 829
E info@pegasusgatewaymotels.co.nz
W pegasusgatewaymotels.co.nz

Away from the city ... but in touch with so much

14 spacious apartments, ideal for families, couples or business people that need space to spread out and relax.

Apartments: 1 & 2 bedroom designated non-smoking, fully equipped kitchen, king size beds, options of free wired or wireless fibre broadband, LCD flat screen and Sky TV. Each has a terrace area with seating.

Two Bedroom accessible apartments x 2.
 15 minutes to Airport with ample parking. A short walk to Bar, Restaurant's, cafe and other shopping facilities.

Pegasus Gateway Motel is the gateway to many attractions – 2 minutes to Pegasus town and superb golf course. Kaiapoi and Rangiora are 5 minutes drive with all they have to offer and then the rest of the fabulous Waimakariri District.



WOODEND BAKERY

- A** 51 Main North Road, SH1, Woodend
P 03 312 2030

Savor the simple pleasures at Woodend Bakery!

From our freshly baked pies to delightful cakes, our artisanal treats are crafted with care.

With a focus on quality and freshness, every bite is a taste of tradition.

Whether it's a daily indulgence or a special occasion, Woodend Bakery has something for everyone.

Come and experience the charm of Woodend Bakery today!



WOODEND BEACH HOLIDAY PARK

- A** 14 Woodend Beach Road, Woodend Beach
P 03 312 7643
E woodendbeachhp@extra.co.nz
W woodendbeachholidaypark.co.nz

Woodend Beach Holiday Park offers guests a relaxing break, set in 55 acres of park like grounds, next to the Tūtaepatu Lagoon and walking/ biking trails and a 2-minute walk to our beautiful sandy beach.

Well situated: 10 minutes from Kaiapoi, Rangiora and Pegasus, 20 minutes from Christchurch and the airport and an hour from Hanmer Springs, it is a perfect location for stopping off. Clean, well-maintained facilities and friendly service all makes your stay enjoyable and memorable. We offer affordable motels and apartments with free Wi-Fi, as well as cabins and large sheltered caravan and tent sites, ablution blocks with free showers, laundry facilities, equipped kitchens and a free to use BBQ area. Biking/walking tracks, several playgrounds and large bird aviaries. Security gate at entrance, wifi and camp shop.



WHY WE LIVE



Pegasus Lake, Swing bridge

PEGASUS

Pegasus town is built around a man-made lake and is a destination full of opportunities for relaxation, recreation and nature experiences. Take time to explore before refuelling at the local eateries. Located 20 minutes north of Christchurch.

MUST DOS:

- Golf on the internationally acclaimed course
- Cross the swing bridge and take a wander around the lake
- Bike or stroll the Te Kōhanga Wetlands
- Take time for a coffee and chill



Overlooking **Lake Pegasus**, our purpose built boat sheds are designed to reflect the nautical and coastal life of the area.

The Good Home Pegasus has a flavour all of its own, when you visit us you'll notice the enticing array of drinks at the bar, the tempting treats on the menu and the smiles of the friendly folk who'll serve them to you.



62 Pegasus Main Street, Pegasus
 03 967 6891 | info@thegoodhomepegasus.co.nz
www.thegoodhomepegasus.co.nz
 Open from 10am daily, 7 days a week



RAVENSWOOD

The perfect stop for all those needs whilst exploring the surrounds. Great eateries and facilities to quench that appetite after cycling local trails or for grabbing deli delights for your picnic lunch before heading to the beaches of Waimakariri.

MIFAN

- A** 4 Clayton Place, Woodend
- P** 03 310 0318, 021 026 03664
- E** mifan.ravenswood@gmail.com
- W** mifanrestaurant.com

Let us WOK for you!

We are a modern Chinese Restaurant located in Ravenswood.

We hope to give everyone a great service and amazing taste.

We have a variety of delicious dishes. Wontons, Dumplings, Spring rolls, Sweet & Sour Pork, Black Bean Beef, Pork Belly, and much more!

Need to host an event?
We can seat up to 85 people.

Dine-in & takeaway & delivery within 5 km. Licensed & BYO.

Tuesday – Sunday 12pm – 2pm,
4.30pm – 9pm



THE COFFEE CLUB

- A** 10 – 14 Bob Robertson Drive, Ravenswood
- P** 03 929 0040
- W** thecoffeeclub.co.nz

The Coffee Club Ravenswood Central, a vibrant and welcoming café.

With its cozy atmosphere and friendly atmosphere, it's the perfect spot to unwind or catch up with friends over a delicious cup of coffee.

Offering a diverse menu featuring freshly brewed coffee, hearty breakfast options, and mouthwatering light bites, there's something to satisfy every craving.

Whether you're popping in for a quick caffeine fix or lingering over a leisurely meal, The Coffee Club Ravenswood Central promises a memorable dining experience.

Open 7 days a week.



WHY WE'RE UP BEFORE DAWN



Waikuku Beach

WAIKUKU

Waikuku is an idyllic beach settlement 30 minutes' north of Christchurch. It is where the Ashley/Rakahuri River meets the Pacific Ocean and has the largest, least modified estuary in Canterbury.

Whether it's shopping, bird watching, surfing, swimming to dining, Waikuku is a destination to be explored.

MUST DOS:

- Visit the lavender farm
- Wander the estuary and spot the birds
- Swim between the flags
- Bike or stroll the cycle trails to Rangiora or Woodend
- Grab an ice cream or fish and chips from the local store

COCOA BLACK WAIKUKU

A 1473 Main North Road, Waikuku
P 03 312 7007
E cocoablackchch@hotmail.com
W cocoablack.co.nz

Cocoa Black based at The Mill Waikuku is your local cafe where everyone is always welcome! Come and relax and enjoy Allpress Coffee and Cocoa Black's signature famous cheese scones.

Try a delicious baked treat from the cabinet and explore a full menu which includes breakfast, brunch and lunch with seasonal specials.

Sit back in a beautiful relaxed outdoor garden setting with impressive art sculptures & products.

Check out the Homewares recycled from Oak wine barrels from Pure by The Barrelman' Shop nextdoor.

In winter, enjoy its cosy interior with comfortable indoor seating and a log burner making this a unique experience with the historical charm retained.

This is set to become a buzzing destination for Cantabrians and visitors alike!



LAVENDER FIELDS

A 224 Waikuku Beach Road, Waikuku
P 03 312 7220
E lavenderfieldsnz@gmail.com
W lavenderfields.co.nz

Enjoy wandering through the picturesque lavender fields, visit the nursery with over 40 varieties of lavender, and browse our shop containing a wide range of luxurious, cruelty free, ethically sourced, lavender products.

Lavender fields is a family business established by Jim Curnow in 1992. His daughter Clare and her husband Kevin worked closely with Jim for many years and now run the farm with their daughter Natalie. Golden retriever Oscar takes care of meeting and greeting. We are proud to say everything is produced on site, from propagating lavender, to distilling the oil, and manufacturing products.

The gardens are at their best from December through early February while distillation generally begins February (depending on the season). We welcome groups and casual visitors without charge.

Open Wednesday - Monday.
Closed Tuesday.





Old School Collective is a destination for those with a love of boutique stores, beauty, good food, coffee and wonderful people.

The Office Café
 Open 7-days. Call
 027 633 4232 to book
Billies Kitchen Shop
Woven Veranda Decor
Louis Who? Fashion

Louis Living Homeware
Browns N Beauty
Room Four Hair Salon
Doggie Stylez Grooming
Mamlambo Fossils



1429 Main North Road, Waikuku
lisa@osc.nz | www.osc.nz | f

FARMERS BAKERS GROWERS MAKERS

www.madenorthcanterbury.co.nz
 @madenorthcanterbury

**DISCOVER WHAT'S MADE
IN NORTH CANTERBURY**

A MONTH FULL OF NORTH CANTERBURY FLAVOUR

The North Course showcases the incredible produce that is made, grown, reared and caught in our bountiful region. It brings food lovers together in the pursuit of tasting and rating the best food and drink throughout November.

www.thenorthcourse.co.nz | #thenorthcourse

WHY IT PAYS TO ARRIVE HUNGRY



Conway Lane

RANGIORA

Rangiora is the largest town in Waimakariri, offering unparalleled boutique shopping experiences and delicious food offerings. This thriving country town also has plenty of parks and wetlands close by, perfect for walking, making it a great place to spend the day.

Only 20 minutes' from Christchurch.

MUST DOS:

- Explore the fabulous fashion boutiques
- Play 18 holes of golf
- Catch a movie or a play
- Watch a spot of cricket at the MainPower Oval
- Mountain bike the Rakahuri Trail
- Visit the art gallery and museum
- Enjoy the flora and fauna at Matawai Park

A POCKET FULL OF SPICES

A 92 Victoria Street, Rangiora
P 03 313 7575
W apocketfullofspices.co.nz

A Pocket Full of Spices is your local Indian Restaurant & Takeaway.

Indian food is the reflection of the heritage of India and we are here to bring that flavour to you, in their purest and most unadulterated form.

The Indian food palette is varied and rich. We will introduce you to our cuisine in a form that hasn't been experienced before.

Spices are the heart of every Indian recipe. We believe that when used in the right combination, they bring out and enhance the natural, organic essence of the food they are being cooked with. This perfect combination is what we offer.

So, come join us, and give us a chance to spoil you. You won't be disappointed.

TRIP ADVISOR RATING:
 #1 of 34 Restaurants in Rangiora



ARTISAN CAFÉ BY RANGIORA BAKERY

A 18 High Street, Rangiora
P 03 311 8837
E artisancafe@rangiorabakery.com
W rangiorabakery.com

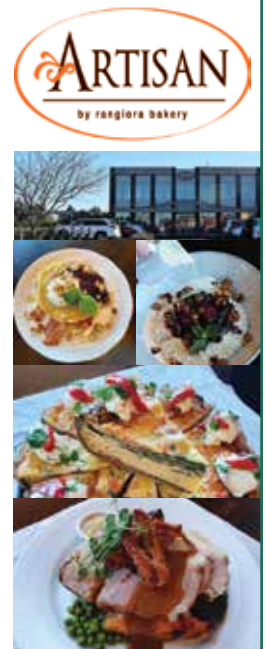
At Artisan Café, our passion is food combined with a café experience like no other. Established in 1860, Rangiora Bakery has been an iconic part of the township.

Artisan Café by Rangiora Bakery has since been recognised for many achievements, such as "Bakery of the year", back-to-back Award winning Hot Cross buns for 2020 and 2021, along with winning the best Christmas Stollen in New Zealand 2022 just to name a few.

Artisan's menu features hearty Brunch and Lunch options, Traditional weekly roasts and our famous Fish & Chip Friday, as well as an extensive array of Sweet and Savoury Cabinet items and Packaged Bakery goods to take home.

Why not hop on your bike and check out our new bike parking space, which is capable of free E Bike charging. See you soon!

Open Daily 7:00am -5:00pm.



BOCKY BOO

- A** 238A High Street, Rangiora
P 03 261 2196
E rangiora@buckyboo.co.nz
W buckyboo.co.nz

Famous for its locally made, authentic Italian gelato – Bucky Boo is a must visit!

Open from 10am-10pm EVERY day, there's always a reason to stop by.

Need a good coffee in the morning? There's nothing better than a Supreme blend alongside one of their famous Triple Cheese Scones!

Fancy a waffle for brunch or somewhere to sit and enjoy dessert after a dinner out? The baked cheesecake is extremely popular, as is the choc fudge brownie or why not try one of their delicious tiramisu's?

But of course, what keeps everyone heading back time and again is their amazing variety of genuinely Italian sorbets and gelato!

With dozens of amazing flavours and plenty of non-dairy options available there's something for everyone!



BLACK AND WHITE COFFEE CARTEL, RANGIORA

- A** 1/5 High Street, Rangiora
P 0210 411 780
W blackandwhitecoffee.co.nz

Come see Bridget, Lydia and their incredible team at Black & White Coffee Cartel, Rangiora. Where we offer a wide range of delicious food, freshly made in house.

There are plenty of options available for you to choose, from our array of cabinet food to our brunch menu.

We aim to have something for everyone! Including food made without gluten or dairy, vegetarian, vegan and keto options available.

We pride ourselves in our exceptional service, food and coffee.

With the Christchurch Northern Corridor cycle track leading right to our doorstep we are a premium tourist destination!



CASA WISTERIA

- A** 108 West Belt, Rangiora
P 027 270 4116 | 03 313 9096
E marg.colin@xtra.co.nz
W casawisteriarangiora.co.nz

Our home is on a quiet back section with off street parking, the perfect location to stay when travelling from North or South.

Located just off Inland Scenic Route 72 to Queenstown, Wanaka and the West Coast. An easy walk, approx 20 mins, to central Rangiora where numerous restaurants offer a wide range of cuisines.

We offer one double and one twin bedroom. The bathroom is for guest use only. Continental breakfast is included in the tariff. WiFi available.

Guests are welcome to use the lounge, TV room, or sit and enjoy the outdoors in our large garden.

Over the Summer months an inground swimming pool is available.



CHAMBER GALLERY

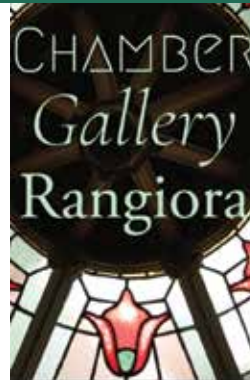
- A** 141 Percival Street, Rangiora
E wcac.gallery@gmail.com
E wcac.concert@gmail.com
W chambergalleryrangiora.com

Chamber Gallery Rangiora is a dedicated art space and chamber music venue located in the historic Rangiora Council Building built in 1907.

The gallery has been operating since 1997 and integrated with the Rangiora Library. Operated by the Waimakariri Community Arts Council, the object of the gallery is to present art exhibitions and concerts for the benefit of the public and to support emerging and practising artists and musicians.

The concert programme combines touring artists sponsored by Chamber Music New Zealand alongside a wide variety of local genre and ensembles.

Follow us on Facebook
 @chambergalleryrangiora
 Instagram @chambergallery or email
 chambergalleryrangiora@gmail.com
 to subscribe to upcoming events



COFFEE WORX

- A** 13 Blakett Street, Rangiora
P 03 423 3243
E sales@coffeeworx.co.nz
W coffeeworx.co.nz

Coffee Worx is a funky retro industrial Roastery Café in the heart of Rangiora, roasting fresh premium coffee for nationwide distribution and serving up the finest espresso daily.

Coffee Worx Rangiora has a friendly, relaxed vibe and offers All Day Brunch, freshly made Cabinet Food and authentic Bagels.

The café is very popular with locals and those visiting Rangiora who want consistently good espresso and the opportunity to buy fresh premium coffee beans.

The café has plenty of parking and is conveniently located next to the New World supermarket.

It is open 7 days a week from 7.30am – 4.30pm Mon-Fri and 8.00am-4.30pm weekends.



FOOLS OF DESIRE

- A** Conway Lane, Rangiora
P 03 310 8133
E foolsofdesire@gmail.com
W foolsofdesire.co.nz

Fools of Desire is a vibrant and exciting Café in the heart of Rangiora, we are award winning and the highest rated Café for breakfast and lunch in town.

We operate with a focus on sourcing local and seasonal produce and using fair trade, free range, organic and ethical products!

Contact us for professional catering, or to host your next function or event at the Cafe.

We love doing things differently and you can see that with our Solar Panels (a solar powered coffee machine), a real live beehive in the Café, and our in house roastery.

Easy parking in Blake Street carpark, you can find us in fashionable Conway Lane.



FRESCA MEDITERRANEAN

- A** 7/188 High Street, Rangiora
P 03 310 7020
E fresca@medfoods.nz
W fresca.nz

Café, bar, restaurant and fine food grocer.

Come and experience true hospitality and see why so many people call Fresca their second home.

Beautiful cabinet food baked daily by our incredible baker, the best coffee in Rangiora, an extensive European wine selection and an exceptional dining experience, whether it be breakfast, lunch or dinner.

We believe that good wine, food made with love and great company are the essential ingredients for a full and happy life.

Meet with friends for an aperitivo before dinner, or, if you prefer to host at home, visit our grocer which is brimming with quality Mediterranean staples.

Be sure to follow us on Facebook for updates on our regular events.



LA LUNA

- A** 5/246 High Street, Rangiora
P 03 423 3149
E laluna.rangiora@gmail.com
W laluna.nz

Discover an eclectic, light-filled restaurant with an art deco flair in the heart of Rangiora.

Stop by for brunch, lunch or a romantic dinner date.

Settle into a plush, pink velvet-lined booth for lunch and choose from a variety of homemade cabinet food or try a dish from their insta-worthy brunch menu.

At dinner time, indulge in their A La Carte menu with daily specials and an extensive selection of cocktails and mocktails.

Follow them on Facebook and Instagram (laluna_rangiora) to keep up to date with their special offers.

Open 9am – 3pm 7 days for brunch and lunch, and 5.30pm – 9pm Tuesday to Sunday for dinner.





KINGSFORD KITCHEN

Kingsford Kitchen specialises in high-quality catering and great-tasting food.

At Kingsford Kitchen Cafe, we offer a great selection of delicious cafe-style meals. Our menu includes hot gourmet meats and salads, as well as all the classics rolls, scones, and muffins.

Visit us Monday to Friday
7.30am - 2.30pm

6 Kingsford Smith Drive, Rangiora

www.kingsfordkitchen.co.nz/cafe

While you're there, check out FitFood's ready meal range.



No meal prep. No dishes. No fuss. Keep it simple and focus on what's important in your life with healthy, ready to heat & eat FitFood meals delivered to your door.

www.fitfood.co.nz

Fitfood
Healthier. Easier. Better.



MAINSTREET SPORTS BAR

- A** 37 High Street, Rangiora
- P** 03 310 7546
- W** main-street-sports-bar.business.site

The friendly bar with the big atmosphere.

Located on the Main Street of Rangiora, we offer a full menu plus pub grub 7-days a week.

Friday nights we host popular raffles. Karaoke night every Thursday.

Live Bands every second Saturday of the month.

Enjoy a free jukebox, live sports, pool table, awesome beer garden, TAB pod, and only TAB terminal in town.

Come on into Mainstreet, the friendliest bar around!



MONTEITH'S RANGIORA

- A** 75 Victoria Street, Rangiora
- P** 03 313 2929
- E** info@mbrangiora.co.nz
- W** monteithsrangiora.com

Experience true Kiwi hospitality at its finest at Monteith's Rangiora. Since 2006, our renowned Monteith's Rangiora has been a staple in the Rangiora community, serving up delicious food and a wide selection of exceptional beers. With 14 tap beers to choose from and exciting weekly rituals, there's always something new to discover.

Whether you're looking for a casual night out with friends or planning a special celebration, Monteith's Rangiora is the perfect venue for any occasion. Our welcoming atmosphere and attentive staff ensure that every visit is a memorable one.

Join us at Monteith's Rangiora to experience the best of Kiwi hospitality, where great food, great beer, and great times await.

* Get \$10 off your meals when you bring in a copy of this advert.



RANGIORA ECO HOLIDAY PARK

- A** 337 Lehmans Road, Rangiora
P 03 313 5759
E rangioraecopark@gmail.com
W rangioraecoholidaypark.co.nz



Set in a spacious park-like grounds, Rangiora Eco Holiday Park offers guests a quiet, country atmosphere.

The Eco Park is opposite the Racecourse on the main bypass road to travel north to Kaikoura or south to Christchurch. It is easy walking distance of Ashley River, only 3.5 km to Rangiora centre and just 15 minutes from Christchurch.

Plenty of features are offered, including internet access, a swimming pool, laundry facilities, TV lounge, playground, barbecue, a shared kitchens and showers, waste dump station and showers for freedom campers.

Accommodation includes A-framed cabins, motel chalets, powered and non-powered sites for caravans and campervans.

Families and sports team groups are welcome.



RANGIORA GOLF CLUB

- A** 79 Golf Links Road, Rangiora
P 03 313 6666
E rangioragolfclub@gmail.com
W rangioragolfclub.co.nz

Located in beautiful North Canterbury, just 20 minutes north from Christchurch city, the Rangiora Golf Club, boasts country hospitality with all the city conveniences.

Our spectacular course will provide a great day out for all levels of golfing ability.

The course is complimented by a practice range, chipping green with practice bunker, putting green, and a golf shop.

Whether you are looking to join in one of our many competitions or just looking to play casually, we look forward to welcoming you to our course.



RANGIORA LEIGH HOLIDAY PARK

- A** 433 Dixons Road, Rangiora
P 03 312 8872
E rangioraleighcamp@xtra.co.nz
W rangioraleighholidaypark.co.nz

Rangiora Leigh holiday Park is a rural campsite with plenty of wide open, grassy areas to park up and relax.

Dog friendly and even a paddock for the horses if you need it during your stay.

Standard cabins and powered and non-powered camp sites available at affordable rates. Large vehicle access. Full camp facilities include laundry, communal kitchen, wheelchair access toilets and showers, TV lounge, pool table, piano and large book exchange.

A great place to base yourself to explore all that the district has to offer: walking tracks, cycle trails, beaches, rivers, boutique shopping and vibrant cafes.



RANGIORA MUSEUM

- A** 29 Good Street, Rangiora
P 03 310 7356
E rangioraearylrecords@xtra.co.nz
W rangioramuseum.wordpress.com

Rangiora Museum's historic building was originally the top storey of the old Bank of New Zealand, moved from the corner of High and Ashley Streets to its present site in 1967.

The Museum houses a wide range of Artifacts, Clothing and Pictorial Records from Rangiora District's past 150 years.

Our Archives contain an extensive collection of written and photographic material, from Schools, Local Families, War Records, Early Houses, Businesses and Sporting and Community Organisations.

Our experienced volunteers are able to carry out research on request.

Admission by Donation.

SOMETHING FOR ALL THE FAMILY

Open Wednesdays and Sundays (except public holidays)

1:30 pm to 4:00 pm or by appointment.



SIRI THAI

- A** 4 / 246 High Street, Rangiora
P 03 928 3025
E sirithairangiora@gmail.com
W sirithairangiora.co.nz

At Siri Thai restaurant we offer meals of excellent quality at affordable prices. We invite you to try our delicious food with friends.

The key to our success is simple: providing quality consistent food that tastes great every single time.

We pride ourselves on serving our customers delicious and authentic Thai dishes.

Eat delicious food. Grab a drink. But most of all, relax!

We thank you from the bottom of our hearts for your continued support.

Try Siri Thai restaurant, you will love us!



THE STATION CAFÉ

- A** 2 Blakett Street, Rangiora
P 03 313 6018
E thestationcaferangiora@gmail.com
W therangiorastation.co.nz

Discover The Station Café Rangiora, nestled within a beautiful historic building, now a bustling café offering a delightful menu and a wide selection of cabinet treats, complemented by Allpress coffee.

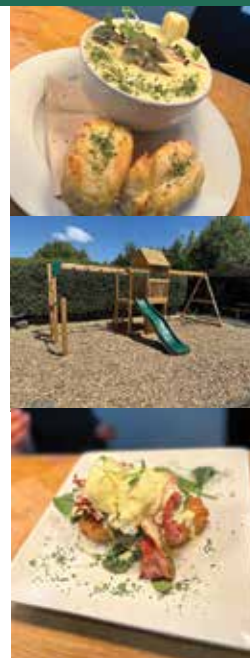
Whether it's a casual catch-up with friends or a special celebration with family, we've got you covered.

With seating for up to 140 guests, indoors and outdoors, and three fantastic kids' playgrounds, there's fun for everyone.

Ample parking and a full license add to the convenience and enjoyment of your visit.

For private events and large group bookings, reach out to us at thestationcaferangiora@gmail.com

* Get a FREE coffee when you bring in a copy of this advert.



THE BROOK BAR AND EATERY

- A** 14 Southbrook Road, Rangiora
P 03 313 7509
E bookings@thebrook.co.nz
W thebrookbar.co.nz

Casual dining at its best with hearty dishes from fish and chips to steak and pasta as well as some classics like Beef Nachos.

With salads, seafood, pizza and a dedicated kids' menu - there really is something for all appetites.

You'll also find mouthwatering desserts, regular lunch and dinner specials plus live sports and a pool table to keep everyone smiling.

Social club day and meat raffles every Thursday.

Live music every fortnight on Saturday and Sunday afternoon with free bbq and kids dine free.





Inland Scenic Route

CUST

The small settlement of Cust promises expansive views over rural farmland, across to rolling hills and mountains. Stop and stretch your legs whilst you peruse the niche shops, soak up the views and enjoy a drink or meal at the café or pub.

MUST DOs:

- Hunt for treasure in the emporium and the preloved curios shops
- While away an afternoon in the sun at the local café
- Enrich the mind at the museum (check for opening hours)
- Take a breath of country air



Ohoka Farmers Market

OHOKA

Basing yourself in the relaxed and peaceful village of Ohoka is a great option when exploring Waimakariri. With some of the best accommodation in the district, it is ideally located within easy driving distance to attractions and destinations.

MUST DOs:

- Enjoy the flavours at the popular Friday morning farmers' market
- Stroll the historic Ohoka Stream Walk
- Take a garden tour

AWAY WITH THE FAIRYS

- A** 1736 Cust Road, Cust Village
- P** 03 312 5250
- E** info@awaywiththefairys.co.nz
- W** awaywiththefairys.co.nz

We specialise in Magical Fairy Garden Miniatures, Houses, Doors, Furniture, Fairies, Animals, Accessories and Garden Signs.

Ever increasing selection of Crystals, Candles, Mystical Books, Wind Chimes, Accessories and Gifts for the modern Witch.

Our Fairy Dell is full of Beautiful Fairy Dresses, Shoes, Crowns, Wands, Butterfly Wings and make believe Dress ups.

The Patchwork Shop includes the largest range of Tilda Fabrics in NZ, enchanting Flower Fairies Fabrics, Quilt and Bag kits, Anni Downs, Hannah Dales adorable animals, Guess How Much I Love You, Peter Rabbit and a whole lot more.

Visit us for magical gifts and visit our website and Facebook for shop hours, new products and projects.



THE PLATFORM BAR, RESTAURANT & CAFE

A 468 Mandeville Road, Ohoka
P 03 312 1234
W theplatformbar.co.nz

Sit back and relax with friends and enjoy a hearty meal or cold brew at this bar, restaurant and café located in Ohoka that is open Monday to Sunday, 8am - late.

Make the most of their weeknight specials including their Monday steak special, Tuesday schnitzel special and Wednesday burger special.

Take part in their bi-weekly pub quiz or Friday night raffle.

To book a table, please call 03 312 1234.



THE RUSTY ACRE

A 1 Roscrea place, Mandeville
P 021 146 6426
E therustyacre@gmail.com

The Rusty Acre is home to Sculptor, Allan O'Loughlin and his partner, Andrea Wadsworth. Established from a bare paddock in 1993, this garden has become an outdoor gallery to the most incredible collection of steel sculptures with over 70 scattered throughout this two-acre garden. It is like no other you will ever see.

Walkways lead you on a visual feast, in and out of garden rooms, around 2 ponds, past a vegetable and herb garden and an orchard.

As you step into our world of whimsy you won't want to miss Andrea's home décor gift shop; a gorgeous space full of special pieces old and new to cherish. Nearby is Allan's workshop where you may find him creating.

Open from late October to April:
 Friday, Saturday, Sunday, 10am - 4pm.
 Monday - Thursday, open by appointment for groups. Adults \$15, Children free. Picnics welcome.



BROADOAK GARDENS



Broadoak is a 2-acre English Garden, drawing inspiration from the grand garden estates of England. In 2023, Broadoak was honored with a five-star rating as a Garden of Significance by the NZ Garden Trust.

Visitors can wander through the garden rooms and formal wedding gardens. Enjoy the knot gardens and topiary plus the various sculptures by renowned Canterbury artists.

The gardens are easy access with good all-weather pathways suitable for wheelchair access. Visitors should allow 1.5 – 2hrs. During the summer months, Broadoak hosts private events in its very own genuine Olde English Pub, The Bike n Bovine.

A two-bedroom self-contained cottage provides a unique and tranquil accommodation option for visitors who wish to spend more time exploring other gardens and vineyards in the area.

Broadoak is a stunning private events and boutique wedding venue located just 20 min north of Christchurch. Please contact us for tours by appointment.

GARDEN TOURS • PRIVATE VENUE • ACCOMMODATION



www.broadoak.co.nz • info@broadoak.co.nz
 232 Jacksons Road, Ohoka
 03 312 0610 • 021 880 583



WHY IT IS BREATH TAKING



Foothills

OXFORD

This small country town is nestled in the foothills of the Southern Alps, 45 minutes' from Christchurch. The town offers a variety of activities and experiences for visitors, with two conservation parks on the doorstep, boutique shopping, unique eateries and an authentic farmers market.

Oxford has one of the darkest and most accessible dark sky experiences in New Zealand, allowing for excellent naked eye views of the Milky Way.

Oxford is a great place to stop, breathe and look up.

MUST DOS:

- View the night sky at the observatory
- Wander the main street of Oxford
- Discover local art at the gallery
- Taste the flavours at the Sunday morning farmers' market
- Learn more at the museum, check for hours
- Explore the foothills
- Picnic and swim at the Ashley Gorge Reserve and River

BLACK BEECH WINE & PIZZA BAR

- A** Unit 1, 46 Main Street, Oxford
- P** 027 312 3338
- E** info@blackbeechbar.com
- W** blackbeechbar.com



Winner of the North Course 2022 & 2023! Come and try The NC and View Hill Pizzas.

Black Beech Wine & Pizza Bar is a popular spot to get together to enjoy boutique wine, craft beer, tapas, and gourmet pizzas in a warm and friendly atmosphere indoors and a dog friendly outdoor area.

We use the best ingredients (local where possible) to create gourmet flavours, ensuring deliciousness.

Choose from over 40 wines, 30 mainstream craft beers to complete your meal.

Follow us on Facebook for live music and events and check our website for opening hours and menu.

Pete and Dani welcome you to Black Beech Wine & Pizza Bar.



INDIAN HUT RESTAURANT AND TAKEAWAYS

- A** 76 Main Street, Oxford
- P** 03 423 3587
- E** info@indianhut.co.nz
- W** indianhut.co.nz



Indian Hut is a unique and authentic Indian restaurant with a mission to satisfy your taste buds with a variety of their mouth watering vibrant curries.

They have been awarded the 'Best Restaurant in Oxford' for the last three consecutive years.

They offer catering for all occasions, too.

Be sure to like them on Facebook and Instagram to keep up with their latest delicious offerings.



KOWHAI RESIDENTIAL SCHOOL OF RIDING LTD

- A** 711 Island Road, View Hill, Oxford
- P** 03 312 4309
- E** info@kowhai.co.nz
- W** kowhai.co.nz



Horse riding lessons and trekking on well schooled horses in a safe country environment.

Private lessons available Monday to Thursday.

Enjoy scenic farm trekking with views over the Canterbury plains.

Lessons from complete basics to Dressage, Show Jumping and Cross Country for experienced riders. Complete beginners and unaccompanied children are welcome.

Courses every weekend and all School Holidays.

Treks depart 2pm daily.

Accommodation & meals available.

Farm Stay available 7 days.



OXFORD OBSERVATORY

- A** 52-60 Bay Road, Oxford
- P** 027 807 0630
- E** observatory@oxford.school.nz
- W** oxford.ngawhetu.nz



Come to the Oxford Observatory, come to our International Dark Sky Park!

The Oxford Observatory is a non-profit, community-run organisation. We are located in the picturesque Oxford township, within an easy drive from Christchurch.

Our shows are star-packed with wonder, and cater for all ages. During your visit, you will get to peer through our high-powered telescope and get a guided sky tour. See the Southern Cross, star clusters, our galactic core and neighbouring galaxies.

Sessions are typically held on weekends, and you will have a choice of an early or late show. Seats are limited so refer to our website for program, pricing and bookings. Private tours can be organised upon request.

Book your window seat now, and revel in our certified dark sky!



OXFORD GALLERY

- A** 72 Main Street, Oxford
- P** 03 312 1639
- E** artsinoxfordgallery@gmail.com
- W** oxfordgallery.org.nz



Oxford Gallery is a place to create, learn, demonstrate and display visual arts.

The gallery is a space for Canterbury and New Zealand creatives showcasing art and object such as ceramics, glass, jewellery, textiles, paintings and original prints.

Our art centre is a multi use venue producing high calibre art exhibitions, workshops, artist forums and community gatherings.

Contact the gallery about our community classes for adults and youth such as ceramics, printmaking, papermaking and life drawing.

HOURS: Thurs to Sun 10am – 4pm (open most public holidays).

Find us on Facebook: [oxfordgallerynz](https://www.facebook.com/oxfordgallerynz)



OXFORD FARMERS MARKET

- A** Main Road, Oxford
- E** info@oxfordfarmersmarket.co.nz
- W** oxfordfarmersmarket.co.nz

Visit the Oxford Farmers Market and enjoy the relaxed, friendly vibe and ambience in a picturesque setting.

Every Sunday 9am to midday.

Enjoy fresh, seasonal and artisan local produce and craft.

Talk to the producer and artisans to understand where our food comes from.

With so much to choose from; hot food and drinks, artisan bread, fresh fruit and vegetables, cordials, pork, free range eggs, honey, baking, dressings and preserves, plants, herbal products, woollen goods, crafts, gifts galore and more... you will easily fill up your cupboards.

This is a family and dog friendly market with a playground next door and plenty to explore.



WORLD FAMOUS SHEFFIELD PIES - OXFORD

- A 78 Main Street Oxford
- P 03 3124 397
- E admin@sheffieldpies.co.nz
- W sheffieldpies.co.nz

Treat yourself on your travels whilst and call into our World Famous Sheffield Pies Bakery & Cafe in Oxford.

A perfect stop on a day trip, for lunch or afternoon tea.

Our products are all made from scratch from top quality ingredients, sourced as locally as possible and crafted to perfection at our bakery in Oxford.

We have a range of our pies made to the original recipe and adding new flavours to our range all the time.

Alongside our pies we offer a delicious array of cakes, slices biscuits all packaged you take home.

Alternatively, stay and enjoy them with a coffee, iced drink or a delicious herbal tea.

Find us on Facebook:
worldfamous-sheffieldpies



Main street, Oxford



The Oxford Club has been a social hub in

Oxford since it was founded in 1887. The club has over 1,500 members with 1/3 of these being women, so is no longer just for the working man with members of all ages and their families enjoying the facilities.

The Club is open 7 days (from 1pm Mon/Tues & 11am Wed-Sun) and has 2 Bar areas, a Bottlestore, Takeaways, Gaming Room (12 machines), 2 TAB pods with dedicated trackside TV's, an ATM, 2 Big Screens, 3 Pool Tables, a Snooker table, Dart boards, as well an outdoor seating area and bowling green.

There is always something happening at the Club with live sports, raffles, bingo, cards, pool, darts, happy hours and Thursday night is quiz night. We have bar snacks available anytime with fabulous toasted sammies and meals 7 days a week specialising in Pizzas and the traditional Club Roast Dinner and our takeaways is open from 5pm daily for a great feed of kiwi fish'n'chips & burgers.

We have ample off-street parking with plenty of room to manoeuvre and self-contained campers and caravans are welcome to park up in the rear of our car park and enjoy the mountain views. There is free water on site and a dump station just 4 mins up the road. We have lovely boutique and bargain shops in the township, an art gallery, museum and a Farmers market every Sunday morning. So we'd love for you to come to Oxford and stay a while in our friendly, quintessential country town.



160 High Street, Oxford 7430
03 312 4411 | info@oxfordclub.co.nz
www.oxfordclub.co.nz



RESPONSIBLE CAMPING

Holiday parks offer a wide range of facilities for motorhomes, campervans, caravans and tents. For a convenient hassle free stay campers are encouraged to use these.

You can freedom camp throughout the Waimakariri District on gravelled or sealed Council land set aside for parking. Look out for prohibited signs at Waikuku Beach.

Or for NZCMA members, check out NZCMA Park, 9 Jones Street, Kaiapoi.

RESPONSIBILITIES OF FREEDOM CAMPERS:

Help us protect our beautiful and natural environment by;

- Removing all rubbish, solid or liquid waste from the camping site when leaving
- Disposing of rubbish, recycling and waste at appropriate sites
- Using appropriate toilets
- Ensuring that all pets are appropriately controlled
- Following all Council bylaws including barbeque use, camp fires, noise and animal control.

RUBBISH AND RECYCLING (TRANSFER STATIONS):

Rangiora: 284 Flaxton Road

Oxford: 46 High Street

HUMAN WASTE DISPOSAL (CARAVAN WASTE DUMP):

Rangiora: Intersection of Railway and Marsh Road

Kaiapoi: 20m east of Jones Street on the river side of Charles Street
McKeown Waimak Junction Centre,
21 Hakarau Road

Oxford: 64 High Street

LIGHT NO FIRES

Use a gas bbq for cooking unless in a licensed holiday park.

For full information please check www.waimakariri.govt.nz