



WHY WE EXPLORE

CONTENTS

Kaiapoi i-SITE	2
Welcome	4
Events	6
Kaiapoi	8
Woodend	17
Pegasus	20
Waikuku	24
Rangiora	26
Cust	33
Ohoka	34
Oxford	37
Tiaki Promise	41
Responsible Camping	42
District Map	43

2022/23



EXPERT LOCAL KNOWLEDGE AND BOOKINGS THROUGHOUT NEW ZEALAND

The Kaiapoi i-SITE Visitor Information Centre is part of New Zealand's i-SITE network with trained and friendly staff who are local experts.

We can assist with your travel itinerary and book accommodation, transport and attractions, New Zealand wide. We supply local and regional maps, DOC brochures and backcountry hut tickets. Fish and Game fishing licences. The Kaiapoi i-SITE can assist with all your travel needs.



KAIAPOI i-SITE VISITOR CENTRE

A 1/143 Williams Street, Kaiapoi
M P.O. Box 80, Kaiapoi 7644
P +64 3 327 3134
E info@kaiapoivisitorcentre.co.nz

Disclaimer: This guide provides you with general information that is true and accurate to the best of our knowledge at the time of printing.



WHY YOU ARE ALWAYS WELCOME

10 Kms of New Zealand beaches, 2 conservation areas in the foothills, 2 regional parks, 1 coastal park, wetlands and lakes all with cycling and walking opportunities. 2 braided rivers perfect for fishing, boating, and having fun. 5 golf courses, 3 farmers markets, 3 art galleries, 4 museums. 2 urban centres, 6 smaller towns, villages and beach settlements. 70 cafes and dining options, 30 boutique shops. Fun events.

All only 15 minutes' north of Christchurch accessed from the Northern Motorway, State Highway 1

For a comprehensive list of all eateries, activities and accommodation, visit www.visitwaimakariri.co.nz





WHY NOT JOIN US

Discover events in Waimakariri on our
website www.visitwaimakariri.co.nz/events






FUN!

FOR THE WHOLE FAMILY!

★ ★ ★

FOR THIS SEASONS RACE DATES

VISIT WWW.WOODFORDGLEN.CO.NZ

WHY NOT SPEND THE AFTERNOON?



KAIAPOI

Kaipoi is a picturesque river town built on the banks of the Kaiapoi River. It is a rapidly growing town that has the heart and feel of a village. Enjoy aquatic activities, boutique shops, services, natural attractions and events.. Kaipoi is significant to Māori. Historically, this was where Māori gathered and traded the resources from their kāinga (village).

Only 15 minutes' north of Christchurch.

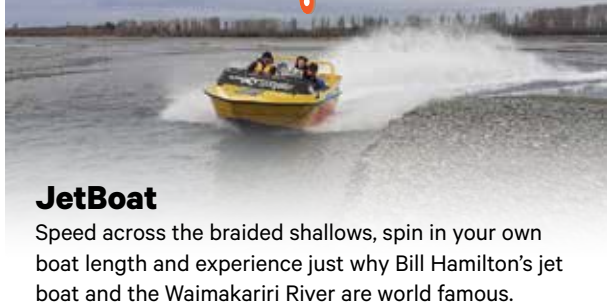
- Kayak, row or stand up paddle board your way down the Kaiapoi River with **Kore Hire** pg 14
- Cruise the Kaiapoi River on a replica steam boat, The Kaiapoi River Queen
- Skim the waters of the Waimakariri River on New Zealand's only airboat, with **Alpine Jet Thrills** pg 10
- Take a splash at **Aqualand**, a fun water park pg 11
- View local talent in **Art on Quay** at the Ruataniwha Civic Centre pg 12
- Learn about Kaiapoi's fascinating history at the local museum
- Enjoy a par three, 9 hole golf course and stay at **Riverlands Golf and Campground** pg 16
- Take a round of 18 holes at the Kaiapoi Golf Club
- Stroll along the riverbanks or jump on your bike and head out to the Kaiapoi Island section of the Waimakariri River Regional Park pg 4 in the Walking and Cycling Guide
- Get your adrenaline fix watching the action at **Woodford Glen Speedway** pg 7
- Swim in the Kaiapoi Aquatic Centre
- Stock up at the Kaiapoi Farmers' Market on a Saturday morning
- Visit the team at the Kaiapoi i-SITE and utilise their wealth of knowledge of the town and district

*An Experience...
more than just a ride!*



AirBoat

Skim over wet stones in a real American style Florida AirBoat, the only commercial AirBoat operating on New Zealand's braided rivers. Experience the arm chair ride!



JetBoat

Speed across the braided shallows, spin in your own boat length and experience just why Bill Hamilton's jet boat and the Waimakariri River are world famous.

**AirBoat or JetBoat - no-one knows
the Waimakariri like Alpine Jet Thrills!**

**Enquiries 0800 26 36 26
www.alpinejetthrills.com**



Ever wanted to try a wipeout course?

Aqualand NZ is the perfect family day out.
Built for kids and big kids at heart.

Test your skills on our obstacle course,
jumping towers, slides + much more.

Located 15 minutes north of Christchurch
and taking online bookings for Summer.



83 Courtenay Drive Kaiapoi
info@aqualand.co.nz | aqualandnz
www.aqualand.co.nz

ART ON THE QUAY

- A** Ruataniwha Kaiapoi Civic Centre
176 Williams Street, Kaiapoi
P 03 327 0066
E info@artonthequay.com
W artonthequay.com



Kaipoi's community art gallery in the Ruataniwha Kaiapoi Civic Centre on the Kaiapoi riverbank.

Kaipoi's Art On The Quay holds exhibitions of a wide variety of art from painting and photography to ceramics and sculpture.

Exhibitions change every six weeks showcasing the work of both local Waimakariri artists as well as those from further afield.

Become a 'Friend of the Gallery' and receive invitations to exhibition openings, giving you first opportunity to purchase artworks.

Follow us on Facebook.
Contact Jackie Watson 022 350 9547 for exhibition space.



KAIAPOI CLUB

- A** 113 Raven Street, Kaiapoi
P 03 327 7884
E info@kaiaipoiclub.co.nz
W kaiaipoiclub.co.nz



Welcomes members and guests affiliated to Clubs NZ.

Some restrictions on the purchase of alcohol but non-affiliated visitors welcome to utilise the dining and other facilities available.

The Bistro open Wednesday to Sunday for lunches and evening meals and the Restaurant open Friday to Sunday for dining from 5.30pm.

Watch all the major sporting events on the large screens or visit the TAB and spacious Gaming Room.

Ample parking space.



Have dinner with the locals
CBK Craft Bar and Kitchen.

Located in the heart of Kaiapoi
with over 60 Hand-Picked Craft Beers
and Ciders, home of the smoking hot
Stonegrill and great daily deals,
what's not to love?



CBK CRAFT BAR & KITCHEN KAIAPOI
4/77 HILTON STREET, KAIAPOI
03 327 9224 | KAIAPOI@CBK.NZ
WWW.CBK.NZ/KAIAPOI

KORE HIRE

- A** Raven Quay, Kaiapoi
P 021 669 474
E info@kore.co.nz
W kore.co.nz/kore-hire

Making the most of the water.

Explore the ever-changing Kaiapoi River with our kayaks, row bows and stand up paddle boards.

Head to the river with friends, family or as a group for a great time on the water.

Enjoy the tree lined banks, going under bridges and the perspective of the town centre from the water.

Great (affordable) fun for the whole family.

Safety briefing and instruction given to get you started.

Open weekends and school holidays.

Bookings preferred.

Find us on Facebook: KORE hire



NORI TABLE

- A** Unit D/178 Williams Street, Kaiapoi
P 03 925 8511
E kaiapoi@noritable.co.nz
W noritable.co.nz

Nori Table offers the best premium selection of sushi.

All sushi is made fresh throughout the day using top quality ingredients.

Our range of rolls and nigiri are designed to have maximum flavor and visual impact with generous filling in each piece.

Beautifully modern restaurant with stunning glass cabinet meticulously filled with expertly crafted sushi.

Fill your own plate with those pieces that call out to you or grab an eco-friendly takeaway box for lunch on the go.

Open 10am – 5pm Monday to Saturday, 11am – 3pm Sunday and Public Holiday.



The owners Lindsay and Marion Pulley have created their established idyllic gardens from scratch. Secret gardens are hidden within formal hedging to create private areas, surrounded by manicured lawns, rose beds and established trees with a stunning rural backdrop.

Lacebark offers private guided garden tours with the option to include a morning or afternoon tea. Enjoy Marion's famous scones along with a cup of tea or coffee. Accessible facilities available.

Our luxury accommodation suite includes a spacious bedroom with super king bed, adjoining ensuite and large formal separate lounge to unwind and put your feet up. There are also three separate bedrooms for additional guests. Breakfast included.

Bookings essential. Get in touch with the friendly team at Lacebark to book your guided garden tour or accommodation.



w: www.lacebark.net | e: info@lacebark.net
 t: 03 327 5296 | m: 027 3782508
 a: 41 Moodys Road, Kaiapoi



RIVERLANDS GOLF

A 45 Doubledays Road, Kaiapoi
P 03 327 5511
E riverlandspark@xtra.co.nz
W riverlandspark.co.nz

Our 9 hole par 3 is an exciting and fun course to have a round of golf on. Set on the quiet, rural outskirts of Kaiapoi.

It's a great course for both experienced and beginner golfers. The short nature of the par 3 course simplifies the game for beginners and allows a more experienced players to fine tune their skills. If it's your first time out or its just second nature to you, come in for a round.

Everyone's welcome, school groups, club days, family fun or work parties.

Riverlands Golf is open 7 days from dawn to dark, enquire at Riverlands Holiday Park office.

Green Fees: \$10 per adult including golf clubs balls & bag. \$8 gold card holders. \$5 youth 8 to 16 paying with an adult. \$20 for monthly green fee. \$5 for Riverlands guest. Group Discounts are given for groups larger than 10 for Golf.



URBAN REVIVAL

A 42 Silverstream Boulevard,
 Silverstream, Kaiapoi
P 03 421 7787
E eat@urbanrevival.co.nz

Urban Revival is an inviting spacious café to meet for deliciously fresh, site prepared food and locally roasted coffee. With delectable specials and daily bagels to entice you, there's no excuse for not having an adventure.

Being fully licensed, you're invited to relax within its eclectic surrounds and indulge in a vino or two with friends. Or choose from five beers on tap.

On cooler days the log fire is lit – nothing beats the ambiance and warmth of a radiating fire. Enjoy freshly made soup or the spectacular creamy mushrooms. Perhaps an "Urban Start" cooked breakfast or some other hearty comfort food from the menu instead. Coupled with your choice of beverage; from teas to coffees and kombucha to smoothies. Perfect!

Don't miss their Friday P nights (pizza, pasta, platters and plonk) - with happy hour from 5pm- 6pm!



WHY WE KEEP MOVING



WOODEND

Woodend has two distinct areas, the township and the beach settlement. With a wide open sandy beach to stroll, swim or surf at, a playground and picnic areas for the family, walking and cycling tracks to explore, Woodend is a recreational paradise. Woodend township offers a range of eateries to fuel you or to satiate your appetite. Located 15 minutes' from Christchurch.

- Take a break at the **Woodend Beach Holiday Park** pg 19
- Check out the Tūhaitara Trust base camp and learn about the environment of the Tūhaitara Coastal Park pg 18
- Walk the Tūtaepatu Trail to Waikuku Beach and enjoy the views of the mountains and lagoon. Pg 6 in the Walking and Cycling Guide.

PEGASUS GATEWAY MOTELS

- A** 4 Main North Road, SH1, Woodend
P 03 312 7829 or 0800 555 829
E info@pegasusgatewaymotels.co.nz
W pegasusgatewaymotels.co.nz

Away from the city ... but in touch with so much

14 spacious apartments, ideal for families, couples or business people that need space to spread out and relax.

Apartments: 1 & 2 bedroom designated non-smoking, fully equipped kitchen, king size beds, options of free wired or wireless fibre broadband, LCD flat screen and Sky TV. Each has a terrace area with seating.

Two Bedroom accessible apartments x 2.
 15 minutes to Airport with ample parking. A short walk to Bar, Restaurant's, cafe and other shopping facilities.

Pegasus Gateway Motel is the gateway to many attractions – 2 minutes to Pegasus town and superb golf course. Kaiapoi and Rangiora are 5 minutes drive with all they have to offer and then the rest of the fabulous Waimakariri District.



WAYSIDE MOTELS

- A** 77 Main North Road, Woodend
P 03 312 7616 or 0800 366 222
E wayside@xtra.co.nz
W waysidemotel.co.nz

We are pleased to offer a mix of self-contained units with cooking facilities, in a peaceful garden setting. We are situated on SHW1 in Woodend, close to Rangiora and Kaiapoi. All our units are ground level and set off the main road.

For something special, try our spacious spa-bath studio units. Together with the ever popular studio, one and two bedroom standard units, we believe we have a room to suit your budget.

Facilities include a Playground, Swimming pool (seasonal), BBQ facilities, SKY Sport, Discovery and Movies, Free Wi-Fi and extensive off street parking.

We are close to cafe's and restaurants and only 2 km from Pegasus Town and Golf Course. Christchurch and its International Airport is an easy 20 minutes drive from our gate.



TE KŌHAKA O TŪHAITARA TRUST

- A** 1 Woodend Beach Road, Woodend/Waikuku Beach
P 03 313 1768
E tkot.enquiries@farmside.co.nz
W tuhaitarapark.org.nz



Te Kōhaka o
Tūhaitara Trust

Tūhaitara Coastal Park covers 10.5 km of coastline between the Waimakariri River and the township of Waikuku.

The park comprises many significant natural features including the 50ha spring fed Tūtaepatu Lagoon, home of many native flora and fauna species.

The park has a network of walking, cycling and horse trails. The walking and cycling trails run the length of the park and connect to the adjoining beach settlements. Horse float parking is located at Kiwi Ave, Waikuku and Ferry Road, Woodend Beach with clearly marked trails and access to the beaches.

Tūhaitara Coastal Park serves to preserve Ngāi Tahu values, retain and enhance rare indigenous biodiversity, and provide recreational and educational opportunities for all people.



WOODEND BEACH HOLIDAY PARK

- A** 14 Woodend Beach Road, Woodend Beach
P 03 312 7643
E woodendbeachhp@xtra.co.nz
W woodendbeachholidaypark.co.nz

Woodend Beach Holiday Park offers guests a relaxing break, set in 55 acres of park like grounds, next to the Tūtaepatu Lagoon and walking/ biking trails and a 2-minute walk to our beautiful sandy beach.

Well situated: 10 minutes from Kaiapoi, Rangiora and Pegasus, 20 minutes from Christchurch and the airport and an hour from Hanmer Springs, it is a perfect location for stopping off. Clean, well-maintained facilities and friendly service all makes your stay enjoyable and memorable. We offer affordable motels and apartments with free Wi-Fi, as well as cabins and large sheltered caravan and tent sites, ablution blocks with free showers, laundry facilities, equipped kitchens and a free to use BBQ area. Biking tracks and several playgrounds. Petting zoo and large bird aviaries. Security gate at entrance, wifi and camp shop.



WHY WE LIVE



PEGASUS

Pegasus town is built around a man-made lake and is a destination full of opportunities for relaxation, recreation and nature experiences. Take time to explore around before relaxing at one of the local eateries. Located 20 minutes north of Christchurch.

- Go pro for the day and play at the Pegasus Golf and Sports Club
- Check out **Premier Wine and Golf Tours** take your journey that bit further pg 21
- Wander around Pegasus Lake
- Bike or stroll along the Te Kōhanga Wetlands.

FLAT WHITE CAFÉ AND BAR

A Corner Pegasus Boulevard
and Main Street, Pegasus Town
P 03 920 4036
E info@flatwhitecafebar.co.nz

Flat White Café and Bar is located just a short stroll from the shores of beautiful Lake Pegasus.

The Café offers a great selection of fresh, tasty cuisine created on site. Choose from a menu or changing cabinet selection with sweet treats and muffins to compliment our famous locally roasted coffee.

Relax either inside or at the outdoor tables and enjoy a wide selection of local wines and beers with your meal.

The café houses a library full of good books to delve into over a cup of coffee.

Meeting room facilities in the adjacent Pavilion are also available – please contact us with your requirements.

Open Daily with variable public holiday hours.



PREMIER GOLF & WINE

A Pegasus Golf & Sports Club
P 027 4600 758
E info@premiergolfandwine.com
W www.premiergolfandwine.com

Two extraordinary experiences, one remarkable day out.

We offer luxury blended golf and wine day trips to the breathtaking Pegasus Golf Club and the award winning Waipara Valley wine region.

Three great packages on offer as well as personalised tours, golf coaching, and even a local golf host.

Pick-ups available from most Christchurch and Waimakariri accommodation.

"What an amazing day, many thanks to Grant and Alison. Highly recommend this "golf and wine experience", just do it folks". - Robyn





Overlooking
Lake Pegasus,
our purpose built boat
sheds are designed to
reflect the nautical
and coastal life
of the area.

The Good Home Pegasus
has a flavour all of its own,
when you visit us you'll
notice the enticing array
of drinks at the bar,
the tempting treats on
the menu and the smiles
of the friendly folk who'll
serve them to you.



62 Pegasus Main St, Pegasus
03 967 6891 | info@thegoodhomepegasus.co.nz
www.thegoodhomepegasus.co.nz



Waimakariri Libraries

Our three libraries in Rangiora, Kaiapoi and Oxford, offer a welcoming space for all ages to relax and connect. Our friendly staff are on hand to help you with any query. You can check your emails, find local maps, learn about the history of Waimakariri, or stay up to date with digital access to global newspapers and magazines. We offer free wifi, computer access and scanning facilities. Printing and photocopying is available for a small fee.

We also host a diverse programme of events. Visit our website to see what we have on during your stay in Waimakariri.

Rangiora

141 Percival Street, Rangiora

Kaiapoi

174 Williams Street, Kaiapoi

Oxford

34 Main Street, Oxford

Find Out More

waimakaririlibraries.com
03 311 8901
library@wmk.govt.nz

 Waimakariri
Libraries

WHY WE'RE UP BEFORE DAWN



WAIKUKU

Waikuku is an idyllic beach settlement 30 minutes' north of Christchurch. It is where the Ashley/Rakahuri River meets the Pacific Ocean and has the largest, least modified estuary in Canterbury. From shopping, bird watching, surfing, swimming to dining, Waikuku is a destination to be explored.

- Visit the **Lavender Fields** as you head into the beach settlement pg 25
- Wander the estuary and enjoy a spot of bird watching, paddle boarding or kite surfing
- Spend a day at Waikuku Beach, surfing, swimming and exploring
- Make a holiday of it and book in at the **Waikuku Beach Camp Ground** pg 25
- Stretch your legs or jump on your bike on the Rakahuri Trail page 7 of the Walking and Cycling Guide
- Drop in to The Old Mill Complex, and the Old School Collective on State Highway One for a spot of shopping or a meal at the café
- Grab an ice cream at the local store and enjoy the local playground and kids paddling pool
- Discover the Kaiapoi Pa the historic trading ground of Ngai Tahu in the 1700's on Preece Road.

LAVENDER FIELDS

A 224 Waikuku Beach Road, Waikuku
P 03 312 7220
E lavenderfieldsnz@gmail.com
W lavenderfields.co.nz

Enjoy wandering through the picturesque lavender fields, visit the nursery with over 40 varieties of lavender, and browse our shop containing a wide range of luxurious, cruelty free, ethically sourced, lavender products.

Lavender fields is a family business established by Jim Curnow in 1992. His daughter Clare and her husband Kevin worked closely with Jim for many years and now run the farm with their daughter Natalie. Golden retriever Oscar takes care of meeting and greeting. We are proud to say everything is produced on site, from propagating lavender, to distilling the oil, and manufacturing products.

The gardens are at their best from December through early February while distillation generally begins February (depending on the season). We welcome groups and casual visitors without charge.

Open Wednesday - Monday.
 Closed Tuesday.



WAIKUKU BEACH HOLIDAY PARK

A 1 Domain Terrace, Waikuku Beach
P 03 312 7600
E waikukubeachholidaypark@gmail.com
W waikukubeachholidaypark.co.nz

Come to paradise!

Seaside location with 186 campsites, 6 cabins and 1 onsite caravan.

Award winning Pegasus Golf Course is 3km to the south.

Trails for hiking or biking follow the river, as well as the Tūhaitara Coastal Park and Tuteapatu Trail which meanders through the forest alongside the beach, through Woodend Beach and on to the Waimakariri River at Kairaki.

Swim, surf, fish, or just relax.

Playground, wireless broadband, pedal cart hire, camp store, wheelchair access toilets and showers, laundry, kitchens, BBQ, in holiday park. Tennis court, skateboard ramp, flying fox, basketball court, toddlers' playground at domain next door. Village general store has takeaway foods as well as postal facilities. Great eateries nearby.

Great memories made here.



WHY IT PAYS TO ARRIVE HUNGRY

RANGIORA

Rangiora is the heart of Waimakariri and is the district's largest town. Rangiora is a vibrant town with fantastic shopping choices, delicious food offerings, and is close to parks and wetlands. All of which make Rangiora a great place to spend the day.

Only 20 minutes from Christchurch.

- Explore the fabulous fashion boutiques
- Enjoy the country air on the **Rangiora Golf Course** pg 31
- Park up your campervan and stay at the **Rangiora Leigh Holiday Park** pg 31
- Catch a movie at the Rangiora Town Hall or take in a local production
- Watch a spot of cricket at the MainPower Oval
- Have a swim at the Dudley Park Aquatic Centre
- Mountain bike the Rakahuri Trail or walk the Mike Kean Walkway alongside the Ashley River
- Visit the **Rangiora Museum** pg 32
- Visit the **Chamber Gallery** for a changing array of beautiful artworks pg 28
- Travel the beautiful Inland Scenic Route 72 from Rangiora to Oxford
- Enjoy the flora and fauna at Matawai Park pg 9 in the Walking and Cycling Guide
- Stop off at the **Rangiora Eco Holiday Park** pg 30
- Make use of the free WiFi available in central Rangiora.

ARTISAN CAFÉ BY RANGIORA BAKERY

A 18 High Street, Rangiora
P 03 311 8837
E artisancafe@rangiorabakery.com
W rangiorabakery.com



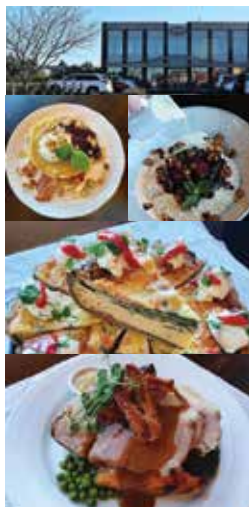
At Artisan Café, our passion is food combined with a café experience like no other. Established in 1860, Rangiora Bakery has been an iconic part of the township.

Artisan café by Rangiora Bakery has since been recognised for many achievements, such as "Bakery of the year", back-to-back Award winning Hot Cross buns for 2020 and 2021, along with winning the best Christmas mince tart just to name a few.

Artisan's menu features hearty Brunch and Lunch options, Traditional weekly roasts and our famous Fish & Chip Friday, as well as an extensive array of Sweet and Savoury Cabinet items and Packaged Bakery goods to Take home.

Why not hop on your bike and check out our new bike parking space, which is capable of free E Bike charging. See you soon!

Open Daily 7:00am-5:00pm.



CHAMBER GALLERY

A 141 Percival Street, Rangiora
E wcac.gallery@gmail.com
E wcac.concert@gmail.com



Chamber Gallery Rangiora is a dedicated art space and chamber music venue located in the historic Rangiora Council Building. Built in 1907, the gallery has been operating since 1997 and integrated with the Rangiora Library.

Operated by the Waimakariri Community Arts Council, the object of the gallery is to present art exhibitions and concerts for the benefit of the public and to support emerging and practising artists and musicians.

The concert programme combines touring artists sponsored by Chamber Music New Zealand alongside a wide variety of local genres and ensembles.

Follow us on:
 Facebook @ChamberGalleryRangiora
 Instagram @chambergallery
 or email to subscribe to upcoming events.



FIVE STAGS RANGIORA

A 3/29 Huntingdon Drive, Rangiora
P 03 313 7871
E info@fivestagsrangiora.co.nz
W fivestagsrangiora.co.nz

Five Stags is a New Zealand Hunting Themed Restaurant serving food for everyday folk.

A place where everyone can enjoy good food, drink and service.

- Open 7 days for lunch and dinner.
- Numerous specials, so there is something for everyone.
- New Zealand Wines.
- New Zealand Craft Beers.
- Offering free wifi.
- Cyclist friendly.
- Accessible parking for campervans.
- Free Parking (not overnight).



FOOLS OF DESIRE

A Conway Lane, Rangiora
P 03 310 8133
E foolsofdesire@gmail.com
W foolsofdesire.co.nz



Fools of Desire is a vibrant and exciting Café in the heart of Rangiora, we are award winning and the highest rated Café for breakfast and lunch in town.

We operate with a focus on sourcing local and seasonal produce and using fair trade, free range, organic and ethical products!

We are passionate about local and seasonal including produce such as free-range chicken, eggs, bread, milk, duck, venison, cheese, olive oil – the list goes on!

We love doing things differently and you can see that with our Solar Panels (a solar powered coffee machine), a real live beehive in the Café, and our in house roastery.

Easy parking in Blake Street carpark, you can find us in fashionable Conway Lane.



MONTEITH'S RANGIORA

- A** 75 Victoria Street, Rangiora
P 03 313 2929
E info@mbbrangiora.co.nz
W monteithsrangiora.com

Comfort, craft and exceptional service.

Monteith's Rangiora has been serving since 2006.

Food is a big part of Monteith's Rangiora, it's where we started and we will always be. Come and enjoy something from our locally inspired menu.

Explore our range of craft beers and ciders while enjoying the high standard of hospitality we have to offer.

Enjoy our \$22* a la carte night on Wednesday's or come and give your brain a workout at our quiz nights every Tuesdays from 7pm onwards.

Plenty of car parks, kid and pet friendly - a place for everyone.

Booking can be made over the phone or through our website.

We'll look forward to hosting you soon.



RANGIORA GOLF CLUB

- A** 79 Golf Links Road, Rangiora
P 03 313 6666
E rangioragolfclub@gmail.com
W rangioragolfclub.co.nz

Located in beautiful North Canterbury, just 20 minutes north from Christchurch city, the Rangiora Golf Club, boasts country hospitality with all the city conveniences.

Our spectacular course will provide a great day out for all levels of golfing ability.

The course is complimented by a practice range, chipping green with practice bunker, putting green, and a golf shop.

Whether you are looking to join in one of our many competitions or just looking to play casually, we look forward to welcoming you to our course.



RANGIORA ECO HOLIDAY PARK

- A** 337 Lehman's Road, Rangiora
P 03 313 5759
E rangioraecopark@gmail.com
W rangioraeco-holidaypark.co.nz

Set in a spacious park-like grounds, Rangiora Eco Holiday Park offers guests a quiet, country atmosphere.

The Eco Park is opposite the Racecourse on the main bypass road to travel north to Kaikoura or south to Christchurch. It is easy walking distance of Ashley River, only 3.5 km to Rangiora centre and just 15 minutes from Christchurch.

Plenty of features are offered, including internet access, a swimming pool, laundry facilities, TV lounge, playground, barbecue, a shared kitchens and showers. Accommodation includes A-framed cabins, motel chalets, powered and non-powered sites for caravans and campervans.

Families and sports team groups are welcome.



RANGIORA LEIGH HOLIDAY PARK

- A** 433 Dixons Road, Rangiora
P 03 312 8872
E rangioraleighcamp@xtra.co.nz
W rangioraleighholidaypark.co.nz

Rangiora Leigh holiday Park is a rural campsite with plenty of wide open, grassy areas to park up and relax.

Dog friendly and even a paddock for the horses if you need it during your stay.

Powered and non-powered camp sites available at affordable rates.

Full camp facilities including laundry, communal kitchen and lounge area.

A great place to base yourself to explore all that the district has to offer: walking tracks, cycle trails, beaches, rivers, boutique shopping and vibrant cafes.



RANGIORA MUSEUM

A 29 Good Street, Rangiora
P 03 310 7356
E rangioraeearlyrecords@xtra.co.nz
W rangioramuseum.wordpress.com

Rangiora Museum's historic building was originally the top storey of the old Bank of New Zealand, moved from the corner of High and Ashley Streets to its present site in 1967.

The Museum houses a wide range of Artifacts, Clothing and Pictorial Records from Rangiora District's past 150 years.

Our Archives contain an extensive collection of written and photographic material, from Schools, Local Families, War Records, Early Houses, Businesses and Sporting and Community Organisations.

Our experienced volunteers are able to carry out research on request.

Admission by Donation.

SOMETHING FOR ALL THE FAMILY

Open Wednesdays and Sundays
 (except public holidays)
 1:30 pm to 4:00 pm or by appointment.



CUST

The small settlement of Cust promises expansive views over rural farmland, across to rolling hills and mountains. Stop and stretch your legs whilst you peruse the niche shops, soak up the views and enjoy a drink or meal at the café or pub.

- Hunt for treasure in the emporium and the preloved curios shops
- While away an afternoon in the sun at the local café
- Enjoy one (or two) of the best pies in the district at the local pub
- Enrich the mind at the Cust Museum, check for opening hours
- Take a breath of fresh country air.

**FARMERS
BAKERS
GROWERS
MAKERS**

MADE

madenorthcanterbury.co.nz
@madenorthcanterbury

Discover what's made
in our backyard.

AWAY WITH THE FAIRYS

A 1736 Cust Road, Cust Village
P 03 312 5250
E info@awaywiththefairys.co.nz
W awaywiththefairys.co.nz

The Fairy, Bear & Patchwork Shop.

We specialise in magical fairy garden supplies including solar powered fairy houses, doors, furniture, and accessories.

Beautiful fairies for all ages; fairy dresses, shoes, wands, garlands, flower fairies and fairy gifts. Superhero dress-ups, police, and fire.

Folkmanis puppets, teddy bears and Pet Pals.

Patchwork fabric including the full range of Tilda, Natalie Bird and Hannah Dale fabric ranges, patterns and accessories, Flower fairies and Anni Downs. Quilt and bag kits and lots of inspiration.

Visit us for unique magical gifts. Lovely reserve with playground behind us where you can check out the Hobbit houses appearing in our garden.

Visit our Facebook for shop hours, new ranges and projects.



WHY NOT STAY A WHILE



OHOKA

Basing yourself in the relaxed and peaceful village of Ohoka is a great option when exploring Waimakariri. With some of the best accommodation in the district, it is ideally located within easy driving distance to attractions and destinations.

- Take the time to visit the Ohoka Farmers' market on Friday mornings
- Take a stroll through **Broadoak Gardens** pg 35
- Pick your own fruit at the **Tram Road Fruit Farm** pg 36
- Stroll the historic Ohoka Stream Historic Walk.
- Visit the **Rusty Acre** for art and gardens pg 35.

BROADOAK GARDEN & BOUTIQUE WEDDING VENUE

A 232 Jacksons Road, Ohoka
P 03 312 0610, 027 6205 188
E info@broadoak.co.nz

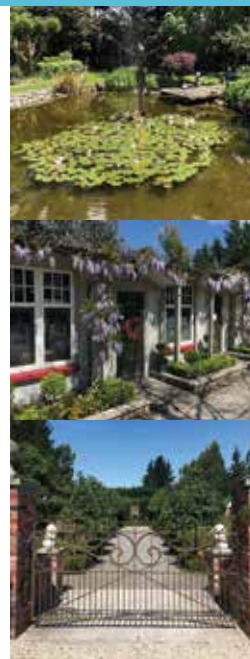
Broadoak is a 2-acre English Garden inspired by the great garden estates of England.

Visitors can wander through the garden rooms and formal wedding gardens. Enjoy the knot gardens and topiary plus the various sculptures by renowned Canterbury artists. The gardens are easy access with good all-weather pathways suitable for wheelchair access. Visitors should allow 1.5 – 2hrs. During the summer months, Broadoak hosts private events in its very own genuine Ole English Pub, The Bike n Bovine.

A two-bedroom self-contained cottage provides a unique and tranquil accommodation option for visitors who wish to spend more time exploring other gardens and vineyards in the area.

Broadoak is a stunning private events and boutique wedding venue located just 20 min north of Christchurch.

Broadoak is open by appointment.



THE RUSTY ACRE

A 1 Roscrea place, Mandeville
P 0211466426
E therustyacre@gmail.com

The Rusty Acre is home to Sculptor, Allan O'Loughlin and his partner, Andrea Wadsworth. Established from a bare paddock in 1993, this garden has become an outdoor gallery to the most incredible collection of steel sculptures with over 70 scattered throughout this two-acre garden. It is like no other you will ever see.

Walkways lead you on a visual feast, in and out of garden rooms, around 2 ponds, past a vegetable and herb garden and an orchard.

As you step into our world of whimsy you won't want to miss Andrea's home décor gift shop; a gorgeous space full of special pieces old and new to cherish. Nearby is Allan's workshop where you may find him creating.

Open from late October to mid-April: Friday, Saturday, Sunday, 10am - 4pm. Monday - Thursday, open by appointment for groups. Adults \$10, Children free. Picnics welcome.



TRAM ROAD FRUIT FARM

A 1520 Tram Road, Swannanoa
P 03 312 0504
E ptapps@xtra.co.nz
W tramroadfruitfarm.co.nz

At Tram Road Fruit Farm, our aim is to give you the opportunity to purchase fresh fruit from our traditional family orchard.

Located 15km up Tram Road from State Highway 1, we are easy drive from Christchurch.

We offer P.Y.O throughout the harvest season, for cherries, raspberries, and boysenberries from 10am to 5pm daily (when weather allows).

These fruits as well as strawberries, plums, peacharines etc can be purchased from our orchard shop in season. Shop hours 9am – 5.30pm daily.

We look forward to meeting you at the orchard where you and your family can enjoy the fruits of nature.

During summer you can also find us at the Ohoka Farmers Market.



WHY IT IS BREATH TAKING



OXFORD

Oxford is a small town set at the foothills of the Southern Alps, 45 minutes' from Christchurch. With two conservation parks on the doorstep, boutique shopping, unique eateries and an authentic farmers market. Oxford is great place to stop and..... breath.

- Browse the shops along the main street and discover that special little something to take home
- Discover the works of local artisans at the **Oxford Art Gallery** pg 39
- Taste the flavours, at Oxford Farmers Market, every Sunday
- Treat yourself a the **World Famous Sheffield Pie Bakery and Café** pg 40
- Visit the Oxford Museum, open on Sundays
- Explore the foothills of Oxford
- Enjoy the pristine Ashley Gorge and River
- Ride to see the views at **Kowhai Equestrian Riding School** pg 39
- View the night sky at the Oxford Area School Observatory (open in the winter)
- Play golf with a view at the Waimakariri Gorge Golf Club.

BLACK BEECH WINE & PIZZA BAR

- A** Unit 1, 46 Main Street, Oxford
P 027 312 3338
E blackbeechwinebar@gmail.com
W blackbeechbar.com



A popular spot to get together and enjoy boutique wine, craft beer, tapas and gourmet pizzas in a warm and friendly atmosphere indoors and a nice dog-friendly outdoor area. In winter we have the fire going and in summer you can sit outside and watch the world go by.

We use only the best ingredients to create our gourmet flavours, ensuring deliciousness every time, trying to use local ingredients as much as possible. Together with a big selection of over 40 wines, 30 mainstream, craft beers and ciders you are sure to find yourself in a sublime dining experience.

Open for dine-in and takeaway and can also be booked for your next Function, Wedding, Birthday or any event.

Follow us on Facebook for live music and events and check our website for opening hours and menu.

Pete and Dani welcome you to Black Beech Wine & Pizza Bar!



GLENTUI LODGE

- A** 140 Glentui Bush Rd, Glentui 7495
P 03 312 1165
E meadows@glentui.co.nz
W glentui.co.nz

It's pretty hard to not be biased when describing Glentui to others; not everyone has the luxury of their own private waterfall and forest to enjoy! If you haven't heard about this beautiful little part of North Canterbury, you're not alone. A little off the beaten track and 10 minutes from Oxford, you'll find Glentui Lodge and the gateway to a number of walks and tramps available in the foothills of the Southern Alps.

A self contained venue with options for both catered and self catered events for groups from 20 to 100+, we have had the pleasure of hosting significant birthdays, family reunions, team building, craft groups, sports groups, school camps, government departments, weddings, baptisms and so much more.

We never know what events are going to come our way and are happy to discuss your ideas and help put them into action.



KOWHAI RESIDENTIAL SCHOOL OF RIDING LTD

- A** 711 Island Road, View Hill, Oxford
P 03 312 4309
E info@kowhai.co.nz
W kowhai.co.nz



Horse riding lessons and trekking on well schooled horses in a safe country environment.

Private lessons available Monday to Thursday.

Enjoy scenic farm trekking with views over the Canterbury plains.

Lessons from complete basics to Dressage, Show Jumping and Cross Country for experienced riders. Complete beginners and unaccompanied children are welcome.

Courses every weekend and all School Holidays.

Treks depart 2pm daily.

Accommodation & meals available.

Farm Stay available 7 days.



OXFORD GALLERY

- A** 72 Main Street, Oxford
P 03 312 1639
E artsinxfordgallery@gmail.com
W oxfordgallery.org.nz



Oxford Gallery is a place to create, learn, demonstrate and display visual arts.

The gallery is a space for Canterbury and New Zealand creatives showcasing art and object such as ceramics, glass, jewellery, textiles, paintings and original prints.

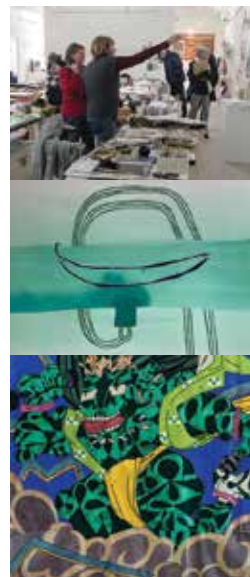
Our art centre is a multi use venue producing high calibre art exhibitions, workshops, artist forums and community gatherings.

Contact the gallery about our community classes for adults and youth such as ceramics, printmaking, papermaking and life drawings.

HOURS: Thurs to Sun 10am – 4pm (open most public holidays).

Find us on Facebook: oxfordgallerynz

Paintings by (centre) Nigel Borell and (below) Philip Trustrum



WORLD FAMOUS SHEFFIELD PIES - OXFORD

A 78 Main Street Oxford
P 03 3124 397
E sales@sheffieldpies.co.nz
W sheffieldpies.co.nz

Treat yourself on your travels whilst and call into our World Famous Sheffield Pies Bakery & Cafe in Oxford.

A perfect stop on a day trip, for lunch or afternoon tea.

Our products are all made from scratch from top quality ingredients, sourced as locally as possible and crafted to perfection at our bakery in Oxford.

We have a range of our pies made to the original recipe and adding new flavours to our range all the time.

Alongside our pies we offer a delicious array of cakes, slices biscuits all packaged you take home.

Alternatively, stay and enjoy them with a coffee, iced drink or a delicious herbal tea.

Find us on Facebook:
[worldfamoussheffieldpies](https://www.facebook.com/worldfamoussheffieldpies)



TIAKI PROMISE

WHILE TRAVELLING IN
NEW ZEALAND I WILL



CARE FOR LAND, SEA AND NATURE,
TREADING LIGHTLY AND LEAVING
NO TRACE



TRAVEL SAFELY, SHOWING CARE
AND CONSIDERATION FOR ALL



RESPECT CULTURE, TRAVELLING
WITH AN OPEN HEART AND MIND



TIAKINEWZEALAND.COM | [#TIAKIPROMISE](https://twitter.com/TIAKIPROMISE)



RESPONSIBLE CAMPING

Holiday parks offer a wide range of facilities for motorhomes, campervans, caravans and tents. For a convenient hassle free stay campers are encouraged to use these.

You can freedom camp throughout the Waimakariri District on gravelled or sealed Council land set aside for parking. Look out for prohibited signs at Waikuku Beach.

RESPONSIBILITIES OF FREEDOM CAMPERS:

Help us protect our beautiful and natural environment by;

- Removing all rubbish, solid or liquid waste from the camping site when leaving
- Disposing of rubbish, recycling and waste at appropriate sites
- Using appropriate toilets
- Ensuring that all pets are appropriately controlled
- Following all Council bylaws including barbeque use, camp fires, noise and animal control.

RUBBISH AND RECYCLING (TRANSFER STATIONS):

Rangiora: 284 Flaxton Road

Oxford: 46 High Street

HUMAN WASTE DISPOSAL (CARAVAN WASTE DUMP):

Rangiora: Intersection of Railway and Marsh Road

Kaipoi: 20m east of Jones Street on the river side
of Charles Street
McKeown Waimak Junction Centre,
21 Hakarau Road

Oxford: 64 High Street

LIGHT NO FIRES

Use a gas bbq for cooking unless in a licensed holiday park.

For full information please check www.waimakariri.govt.nz